

17,000 SF INDUSTRIAL BUILDING - FOR SALE OR LEASE

614 N. Washington, Springfield, MO 65806



HIGHLIGHTS

- 17,000 SF plus 3,750 SF Mezzanine
 - 11,615 SF Warehouse
 - 5,385 SF Office
- Two (2) 8' x 8' Overhead Doors
- One (1) 8' x 10' Overhead Door
- One (1) 8' x 12' Overhead Door
- Lot Size: 1.13 Acres
- \$900,000.00 Sales Price
- \$5.00 / SF = \$7,084.00 / Month
- NNN Lease
- Zoned HM: Heavy Manufacturing
- 22' Eve Height
- Close Proximity To: MSU, OTC, Drury, Downtown Springfield & Government Plaza

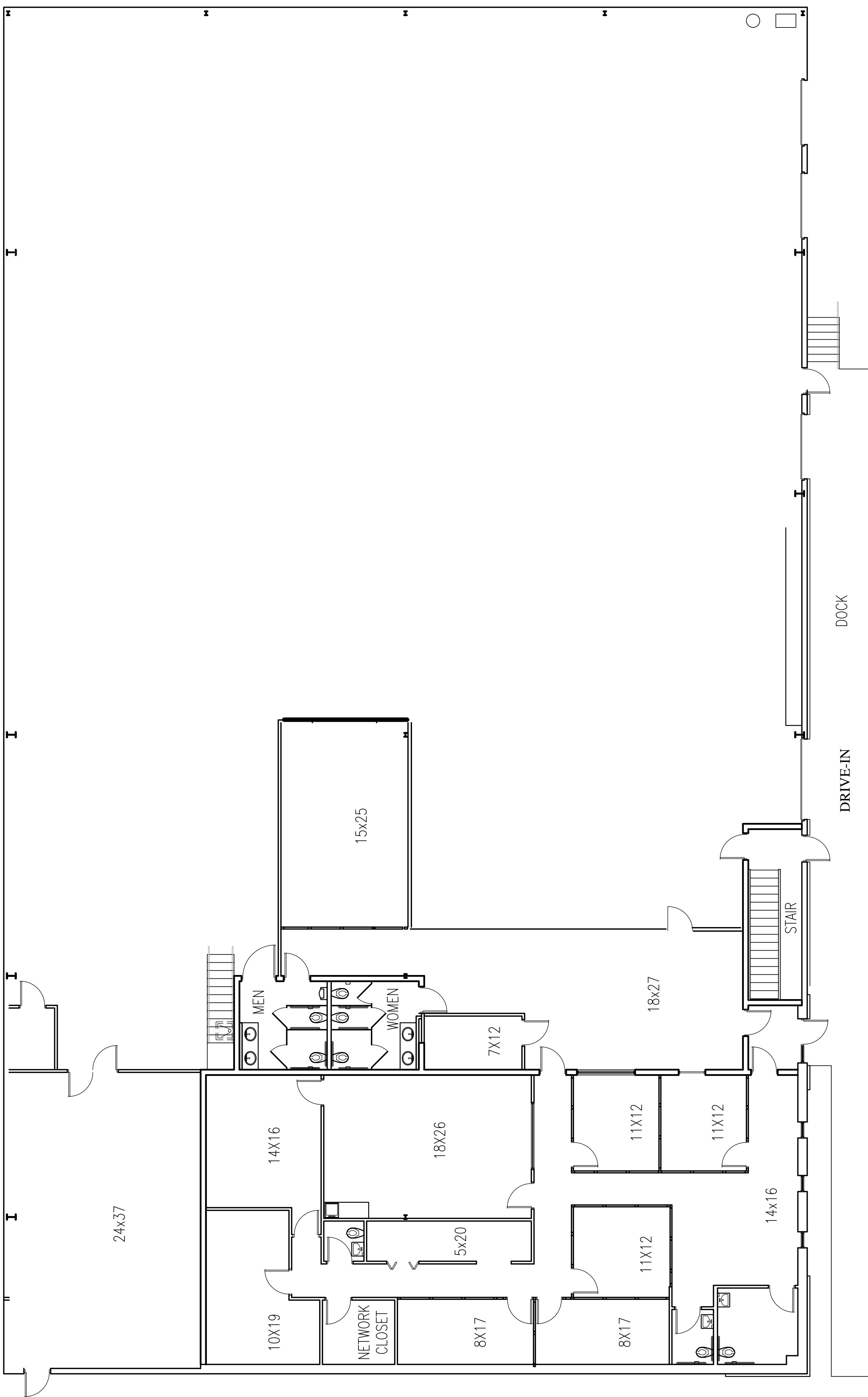
614 N. Washington

Springfield, MO 65806



2921 S. National Ave., Springfield, MO 65804

(417) 887-5535 email: beall@billbeall.com



614 N. Washington

Springfield, MO 65806



2921 S. National Ave., Springfield, MO 65804
(417) 887-5535 email: beall@billbeall.com